



VILLAGE OF TWIN LAKES

105 East Main Street P O Box 1024 Twin Lakes, Wisconsin 53181
Phone (262) 877-2858 Fax (262) 877-4019

**SPECIAL VILLAGE BOARD MEETING
FOLLOWING THE COMMITTEE OF THE WHOLE
Monday, June 6, 2022
Village Hall, 105 E. Main Street, Twin Lakes, WI**

AGENDA

1. CALL TO ORDER
2. PLEDGE OF ALLEGIANCE
3. ROLL CALL: TRUSTEES ANDRES, BOWER, FITZGERALD, KAROW, KASKIN, PERL,
PRESIDENT SKINNER
4. Discussion and possible action regarding landscaping at Village Hall (105 E. Main St.).
5. ADJOURN

MATTERS MAY BE TAKEN IN ORDER OTHER THAN LISTED

Requests from persons with disabilities, who need assistance to participate in this meeting or hearing, should be made to the Clerk Treasurer's office in advance so the appropriate accommodations can be made.



PCO #033

Scherrer Construction Co., Inc.
 601 Blackhawk Drive PO Box 740
 Burlington, Wisconsin 53105
 Phone: (262) 539-3100
 Fax: (262) 539-3101

Project: 10-872 - Twin Lakes Village Hall
 105 E Main Street
 Twin Lakes, Wisconsin 53181

Prime Contract Potential Change Order #033: RFP #14: Additional Landscaping

TO:	Village of Twin Lakes 108 E Main St P.O. Box 1024 Twin Lakes Wisconsin, 53181	FROM:	Scherrer Construction Co., Inc. 601 Blackhawk Drive, P.O. Box 740 Burlington Wisconsin, 53105
PCO NUMBER/REVISION:	033 / 0	CONTRACT:	10-872 - Twin Lakes Village Hall
REQUEST RECEIVED FROM:		CREATED BY:	Robin Hetland (Scherrer Construction Co., Inc.)
STATUS:	Pending - Proceeding	CREATED DATE:	5/26 /2022
REFERENCE:		PRIME CONTRACT CHANGE ORDER:	None
FIELD CHANGE:	No		
LOCATION:		ACCOUNTING METHOD:	Amount Based
SCHEDULE IMPACT:		PAID IN FULL:	No
		TOTAL AMOUNT:	\$32,296.00

POTENTIAL CHANGE ORDER TITLE: RFP #14: Additional Landscaping

CHANGE REASON: Owner Change Order

POTENTIAL CHANGE ORDER DESCRIPTION: *(The Contract Is Changed As Follows)*

ATTACHMENTS:

[SKM_C754e22052608430.pdf](#)

#	Cost Code	Description	Type	Amount
1	02-700 - Landscaping	Proposal: RFP #14 landscaping	Subcontract	\$ 32,296.00
Subtotal:				\$32,296.00
Grand Total:				\$32,296.00

Authorization to Proceed with this work.

Signature to Proceed: _____

REQUEST FOR PROPOSAL

PROJECT: *(name and address)*

Twin Lakes Village Hall
105 E Main Street
Twin Lakes, WI 53181

CONTRACT INFORMATION

Contract for: General Construction
Date: TBD

RFP INFORMATION

RFP Number: 14
Date: May 12, 2022

OWNER: *(name and address)*

Village of Twin Lakes
108 E Main Street
Twin Lakes, WI 53181

ARCHITECT: *(name and address)*

Kueny Architects, LLC
10505 Corporate Drive, Suite 100
Pleasant Prairie WI, 53158

CONTRACTOR: *(name and address)*

Scherrer Construction Co, Inc
601 Black Hawk Drive
Burlington, WI 53105

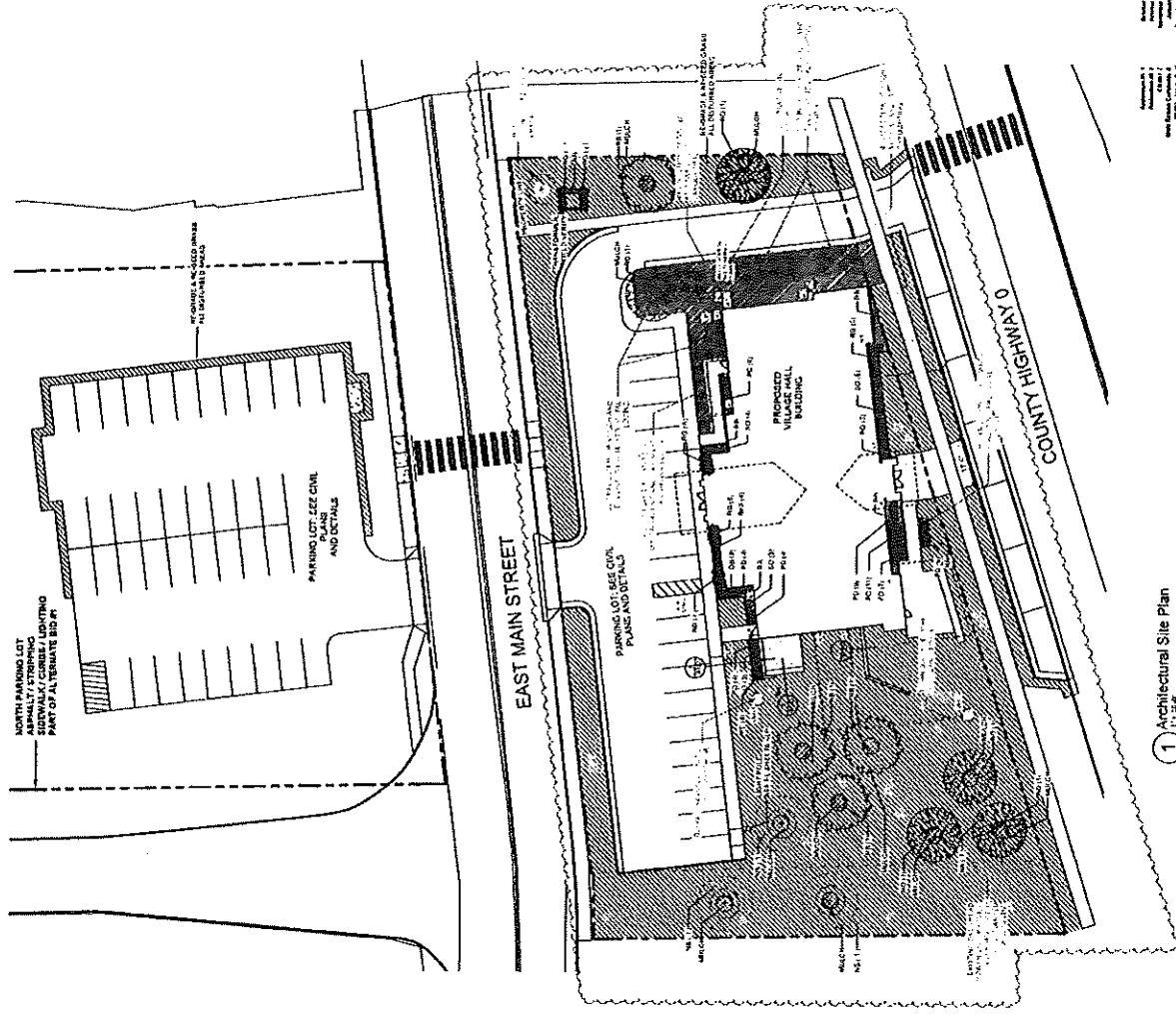
The Owner requests an itemized proposal for changes to the Contract Sum and Contract Time for their proposed modifications to the Contract Documents described below. The Contractor shall submit a proposal within (14) days or notify the Architect in writing of the anticipated date of submission.

DESCRIPTION OF PROPOSED MODIFICATIONS:

Please provide a price proposal for the following items:

1. Please provide a price and credit proposals for the following items:
 - a. Please provide a price to tie-in downspout #04 to storm sewer system MH-1. See attached plan for locations and proposed routing.
 - b. Please provide a price to tie-in downspouts #05 and #06 to storm sewer system MH-2. See attached plan for locations and proposed routing.
 - c. Please provide a price to bore downspout #01 under the existing sidewalk and daylight per plans. Please see attached downspout sleeve detail and provide a 3'-0" (D) x 4'-0"(W) x 6'-0"(L) stone daylighting section.
 - d. Please provide a price for downspout extensions at downspouts #02 and #03.
 - e. Please provide a price to furnish and install a 3'-0" (D) x 4'-0"(W) x 6'-0"(L) stone daylighting section at downspout #07.
 - f. Please provide a price to replace the East side grass seeded area with decorative river rock. Please provide a price proposal and credit for eliminated seeding. See plan for proposed area.
 - g. Please provide a price proposal to install (4) sections of mulched areas per the attached plan. Please provide metal edging. Please provide a price proposal to furnish and install ornamental grasses and planting in mulched areas. Please propose per the site Landscape meeting.
 - h. Please see new locations of west side site trees. Proposed new locations attached.
 - i. Please provide a price to furnish and install (1) Red Oak per the attached plans at the East parking lot island.
 - j. Please provide an owner credit for the elimination of (3) Norway Spruce trees as shown on the attached drawing.



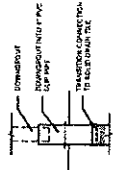


1 Architectural Site Plan

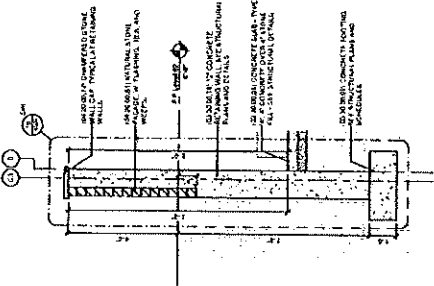
LANDSCAPE SCHEDULE	
1	AS SHOWN AND NOTED IN ALL DETAIL SHEETS
2	SEE CIVIL AND ELECTRICAL FOR DETAILS
3	SEE CIVIL AND ELECTRICAL FOR DETAILS
4	SEE CIVIL AND ELECTRICAL FOR DETAILS
5	SEE CIVIL AND ELECTRICAL FOR DETAILS
6	SEE CIVIL AND ELECTRICAL FOR DETAILS
7	SEE CIVIL AND ELECTRICAL FOR DETAILS
8	SEE CIVIL AND ELECTRICAL FOR DETAILS
9	SEE CIVIL AND ELECTRICAL FOR DETAILS
10	SEE CIVIL AND ELECTRICAL FOR DETAILS
11	SEE CIVIL AND ELECTRICAL FOR DETAILS
12	SEE CIVIL AND ELECTRICAL FOR DETAILS
13	SEE CIVIL AND ELECTRICAL FOR DETAILS
14	SEE CIVIL AND ELECTRICAL FOR DETAILS
15	SEE CIVIL AND ELECTRICAL FOR DETAILS
16	SEE CIVIL AND ELECTRICAL FOR DETAILS
17	SEE CIVIL AND ELECTRICAL FOR DETAILS
18	SEE CIVIL AND ELECTRICAL FOR DETAILS
19	SEE CIVIL AND ELECTRICAL FOR DETAILS
20	SEE CIVIL AND ELECTRICAL FOR DETAILS
21	SEE CIVIL AND ELECTRICAL FOR DETAILS
22	SEE CIVIL AND ELECTRICAL FOR DETAILS
23	SEE CIVIL AND ELECTRICAL FOR DETAILS
24	SEE CIVIL AND ELECTRICAL FOR DETAILS
25	SEE CIVIL AND ELECTRICAL FOR DETAILS
26	SEE CIVIL AND ELECTRICAL FOR DETAILS
27	SEE CIVIL AND ELECTRICAL FOR DETAILS
28	SEE CIVIL AND ELECTRICAL FOR DETAILS
29	SEE CIVIL AND ELECTRICAL FOR DETAILS
30	SEE CIVIL AND ELECTRICAL FOR DETAILS
31	SEE CIVIL AND ELECTRICAL FOR DETAILS
32	SEE CIVIL AND ELECTRICAL FOR DETAILS
33	SEE CIVIL AND ELECTRICAL FOR DETAILS
34	SEE CIVIL AND ELECTRICAL FOR DETAILS
35	SEE CIVIL AND ELECTRICAL FOR DETAILS
36	SEE CIVIL AND ELECTRICAL FOR DETAILS
37	SEE CIVIL AND ELECTRICAL FOR DETAILS
38	SEE CIVIL AND ELECTRICAL FOR DETAILS
39	SEE CIVIL AND ELECTRICAL FOR DETAILS
40	SEE CIVIL AND ELECTRICAL FOR DETAILS
41	SEE CIVIL AND ELECTRICAL FOR DETAILS
42	SEE CIVIL AND ELECTRICAL FOR DETAILS
43	SEE CIVIL AND ELECTRICAL FOR DETAILS
44	SEE CIVIL AND ELECTRICAL FOR DETAILS
45	SEE CIVIL AND ELECTRICAL FOR DETAILS
46	SEE CIVIL AND ELECTRICAL FOR DETAILS
47	SEE CIVIL AND ELECTRICAL FOR DETAILS
48	SEE CIVIL AND ELECTRICAL FOR DETAILS
49	SEE CIVIL AND ELECTRICAL FOR DETAILS
50	SEE CIVIL AND ELECTRICAL FOR DETAILS

GENERAL:
 ALL DETAIL SHEETS SHALL BE REVISIONS.
 1. ALL DETAIL SHEETS SHALL BE REVISIONS.
 2. ALL DETAIL SHEETS SHALL BE REVISIONS.
 3. ALL DETAIL SHEETS SHALL BE REVISIONS.
 4. ALL DETAIL SHEETS SHALL BE REVISIONS.
 5. ALL DETAIL SHEETS SHALL BE REVISIONS.
 6. ALL DETAIL SHEETS SHALL BE REVISIONS.
 7. ALL DETAIL SHEETS SHALL BE REVISIONS.
 8. ALL DETAIL SHEETS SHALL BE REVISIONS.
 9. ALL DETAIL SHEETS SHALL BE REVISIONS.
 10. ALL DETAIL SHEETS SHALL BE REVISIONS.
 11. ALL DETAIL SHEETS SHALL BE REVISIONS.
 12. ALL DETAIL SHEETS SHALL BE REVISIONS.
 13. ALL DETAIL SHEETS SHALL BE REVISIONS.
 14. ALL DETAIL SHEETS SHALL BE REVISIONS.
 15. ALL DETAIL SHEETS SHALL BE REVISIONS.
 16. ALL DETAIL SHEETS SHALL BE REVISIONS.
 17. ALL DETAIL SHEETS SHALL BE REVISIONS.
 18. ALL DETAIL SHEETS SHALL BE REVISIONS.
 19. ALL DETAIL SHEETS SHALL BE REVISIONS.
 20. ALL DETAIL SHEETS SHALL BE REVISIONS.
 21. ALL DETAIL SHEETS SHALL BE REVISIONS.
 22. ALL DETAIL SHEETS SHALL BE REVISIONS.
 23. ALL DETAIL SHEETS SHALL BE REVISIONS.
 24. ALL DETAIL SHEETS SHALL BE REVISIONS.
 25. ALL DETAIL SHEETS SHALL BE REVISIONS.
 26. ALL DETAIL SHEETS SHALL BE REVISIONS.
 27. ALL DETAIL SHEETS SHALL BE REVISIONS.
 28. ALL DETAIL SHEETS SHALL BE REVISIONS.
 29. ALL DETAIL SHEETS SHALL BE REVISIONS.
 30. ALL DETAIL SHEETS SHALL BE REVISIONS.
 31. ALL DETAIL SHEETS SHALL BE REVISIONS.
 32. ALL DETAIL SHEETS SHALL BE REVISIONS.
 33. ALL DETAIL SHEETS SHALL BE REVISIONS.
 34. ALL DETAIL SHEETS SHALL BE REVISIONS.
 35. ALL DETAIL SHEETS SHALL BE REVISIONS.
 36. ALL DETAIL SHEETS SHALL BE REVISIONS.
 37. ALL DETAIL SHEETS SHALL BE REVISIONS.
 38. ALL DETAIL SHEETS SHALL BE REVISIONS.
 39. ALL DETAIL SHEETS SHALL BE REVISIONS.
 40. ALL DETAIL SHEETS SHALL BE REVISIONS.
 41. ALL DETAIL SHEETS SHALL BE REVISIONS.
 42. ALL DETAIL SHEETS SHALL BE REVISIONS.
 43. ALL DETAIL SHEETS SHALL BE REVISIONS.
 44. ALL DETAIL SHEETS SHALL BE REVISIONS.
 45. ALL DETAIL SHEETS SHALL BE REVISIONS.
 46. ALL DETAIL SHEETS SHALL BE REVISIONS.
 47. ALL DETAIL SHEETS SHALL BE REVISIONS.
 48. ALL DETAIL SHEETS SHALL BE REVISIONS.
 49. ALL DETAIL SHEETS SHALL BE REVISIONS.
 50. ALL DETAIL SHEETS SHALL BE REVISIONS.

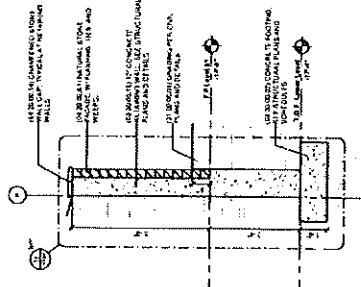
Landscape Notes



5 Downspout Sleeve



3 Retaining Wall - North - Alternate #3



4 Retaining Wall - South - Alternate #1

Ringers Services

2101 IL Rt 176
Crystal Lake, Illinois 60014

QUOTE #211588

SENT ON:
May 25, 2022

RECIPIENT:

Scherrer Construction Company, Inc.

105 East Main Street
Twin Lakes, Wisconsin 53181
Job Name: Commercial Construction
Salesperson: Mike



Phone: (847)989-5593
Email: sales@ringerslandscaping.com
Website: www.ringerslandscaping.com

PRODUCT / SERVICE	DESCRIPTION	QTY.	UNIT PRICE	TOTAL
Install PVC Pipe 6"	PER PLAN - Downspout #4 MH-1 -install downspout sleeves per spec on Note 3 (A101): Downspout into 8" PVC Slip Pipe, transition connection to solid drain tile. -install (43') 6" Solid PVC Drain Tile -tie in downspout to storm sewer system	1	\$2,706.00	\$2,706.00*
Install PVC Pipe 6"	PER PLAN - Downspout #5 & #6 MH-2 -install downspout sleeves per spec on Note 3 (A101): Downspout into 8" PVC Slip Pipe, transition connection to solid drain tile. -install (126') 6" Solid PVC Drain Tile -tie in downspout to storm sewer system	1	\$6,318.00	\$6,318.00*
Install PVC Pipe 6"	PER PLAN - Downspout #1 -install downspout sleeves per spec on Note 3 (A101): Downspout into 8" PVC Slip Pipe, transition connection to solid drain tile. -bore under the sidewalk -install (63') 6" Solid PVC Drain Tile -daylight downspout into a 3'D x 4'W x 6'L drywell	1	\$5,509.00	\$5,509.00*
Install PVC Pipe 6"	PER PLAN - Downspout #2 & #3 -install downspout sleeves per spec on Note 3 (A101): Downspout into 8" PVC Slip Pipe, transition connection to solid drain tile. -install (10') 6" Solid PVC Drain Tile	1	\$439.00	\$439.00*

Ringers Services
 2101 IL Rt 176
 Crystal Lake, Illinois 60014

QUOTE #211588

SENT ON:
 May 25, 2022

PRODUCT / SERVICE	DESCRIPTION	QTY.	UNIT PRICE	TOTAL
Install Dry Well	PER PLAN - DAYLIGHTING SECTION BY DOWNSPOUT #7 -per unit -excavate area and dispose of material -install 4 ounce unwoven fabric to eliminate to filter out debris -install washed gravel in open trench DIMENSIONS - 3'D x 4'W x 6'L	1	\$1,912.00	\$1,912.00*
Install River Rock	PER PLAN - EAST SIDE -install 4 oz landscape fabric -install 25 tons at 4" of 1.5"-2" river rock (includes credit for seeded area on original scope of work)	1	\$4,350.00	\$4,350.00*
Install Design	PER PLAN - MULCH AREAS ON THE EAST SIDE -install (35) Heavy Metal Switch Grass - 1G -install (215') Metal edging -install (10 CY) of Mulch -install (950 SF) of 4 oz. landscape fabric	1	\$5,663.00	\$5,663.00*
Install Trees	PER PLAN -credit for (3) Norway Spruce on the original scope of work	1	-\$894.51	-\$894.51*
Install Trees	PER PLAN -per tree -install (1) 3.5" Red Oak	1	\$812.00	\$812.00*
Install Topsoil	PER PLAN - ALL TURF AREAS -per semi -install pulverized topsoil to prep for area	5	\$1,096.34	\$5,481.70*

Ringers Services

2101 IL Rt 176
Crystal Lake, Illinois 60014

QUOTE #211588

SENT ON:

May 25, 2022

Total

\$32,296.19

* Non-taxable

This quote is valid for the next 10 days, after which values may be subject to change.

Signature: _____ Date: _____